



GAT MONTHLY MEMBERSHIP PROGRESS REPORT

Results as of: 6/30/2022

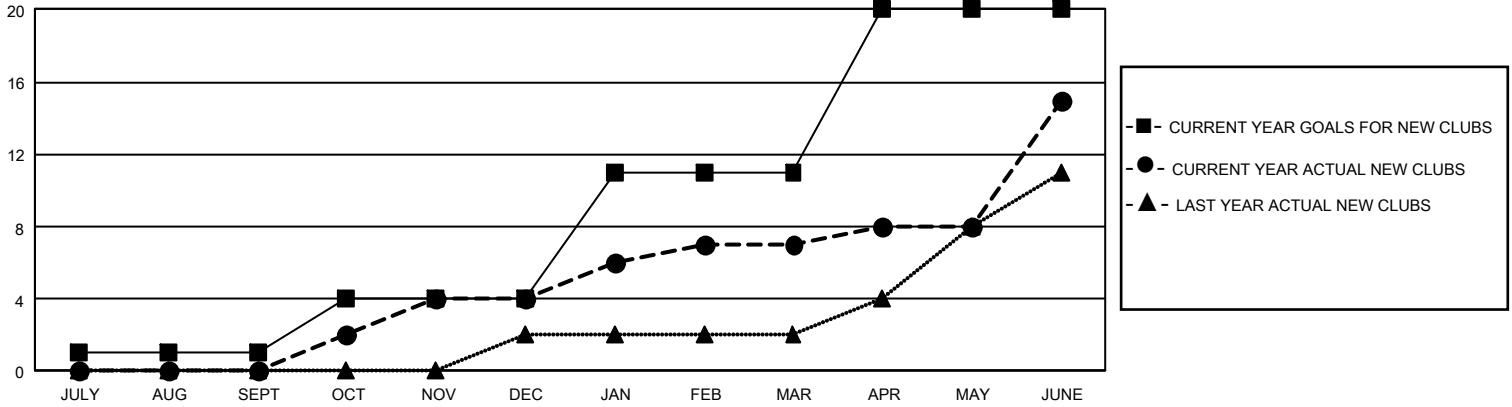
GMT Constitutional Area 3, Group H

REPORT DOES NOT INCLUDE CLUBS IN UNDISTRICTED AREAS.

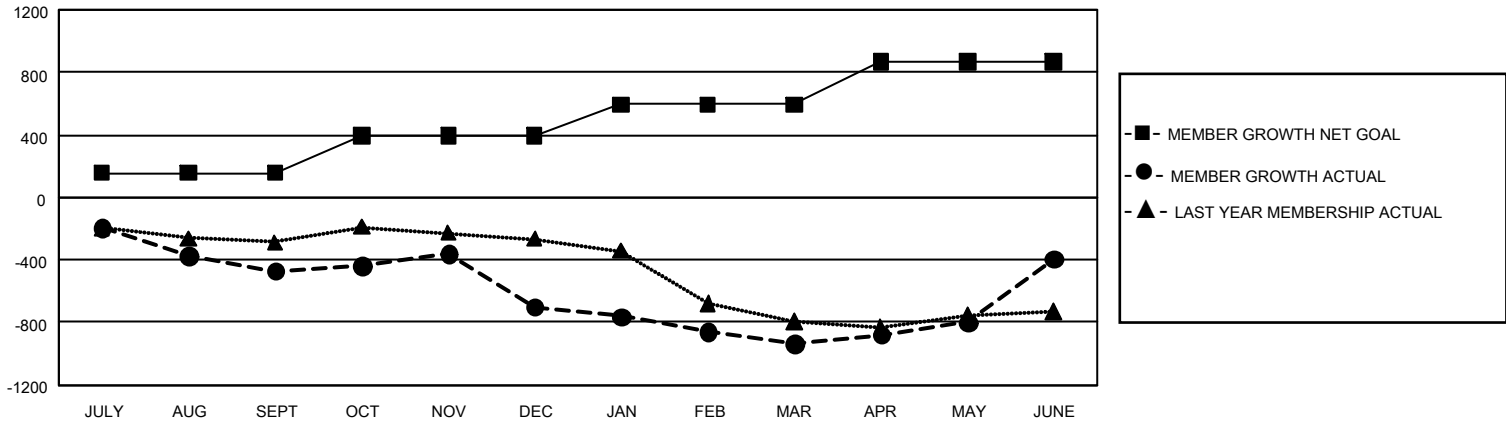
Clubs			
RESULTS FOR 2021-2022			
QUARTER	NEW CLUB GOAL	NEW CLUBS	DROPPED CLUBS
JULY/AUG/SEPT	3	0	10
OCT/NOV/DEC	9	4	10
JAN/FEB/MAR	21	3	7
APR/MAY/JUNE	27	8	6

Members			
RESULTS FOR 2021-2022			
QUARTER	MEMBER GROWTH NET GOAL	MEMBER GROWTH ACTUAL	DROPPED MEMBERS ACTUAL (including transfers)
JULY/AUG/SEPT	155	232	625
OCT/NOV/DEC	240	546	739
JAN/FEB/MAR	200	340	453
APR/MAY/JUNE	275	1,307	700

GOALS AND ACTUAL NEW CLUBS CUMULATIVE



GOALS AND ACTUAL MEMBERS CUMULATIVE



DROPPED CLUBS: 33	349 CLUBS OF 512 ADDED 1 OR MORE NEW MEMBERS	<u>GENDER DISTRIBUTION</u>	
<u>DROPPED MEMBERS</u>		MALE	7,351 (49.78%)
DECEASED	148	FEMALE	7,409 (50.17%)
CLUB CANCELLED	417	NON BINARY	0 (0.00%)
OTHER	1,952	PREFER NOT TO ANSWER	7 (0.05%)
TOTAL	2,517	TOTAL FAMILY UNIT MEMBERS	7,544
	CLICK HERE FOR CUMULATIVE MEMBERSHIP DATA	FAMILY MEMBERS PAYING HALF DUES	3,855